

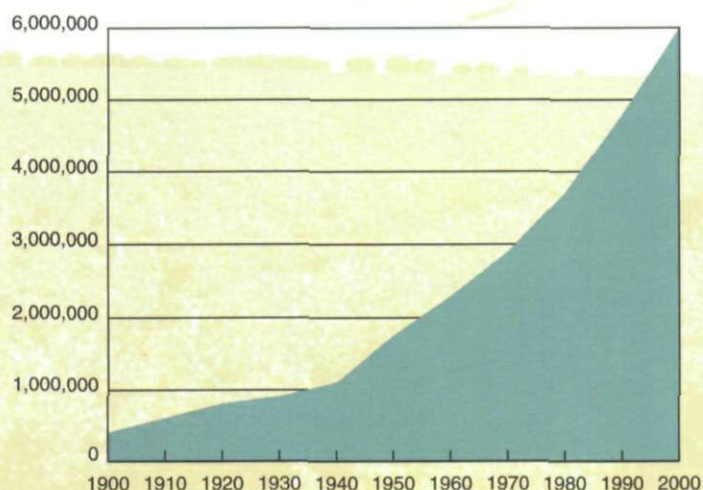
# By the Numbers: A look at



## Population

### Central Valley Population 1900-2000

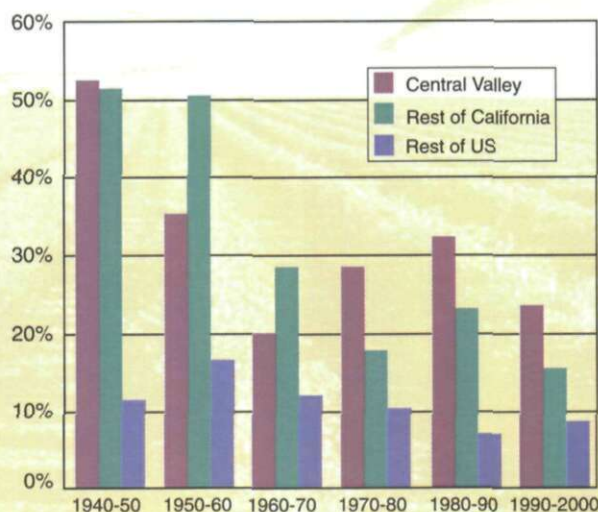
An estimated 5 to 6 million people live in the Sacramento and San Joaquin valleys, which together comprise the Great Central Valley of California.



### Ten-year Growth Rates

Percent increase by decade, 1940-2000

For the past 30 years, the Central Valley has led California in percentage of population growth.



### Five of 10 Fastest Growing California Cities are in the Central Valley

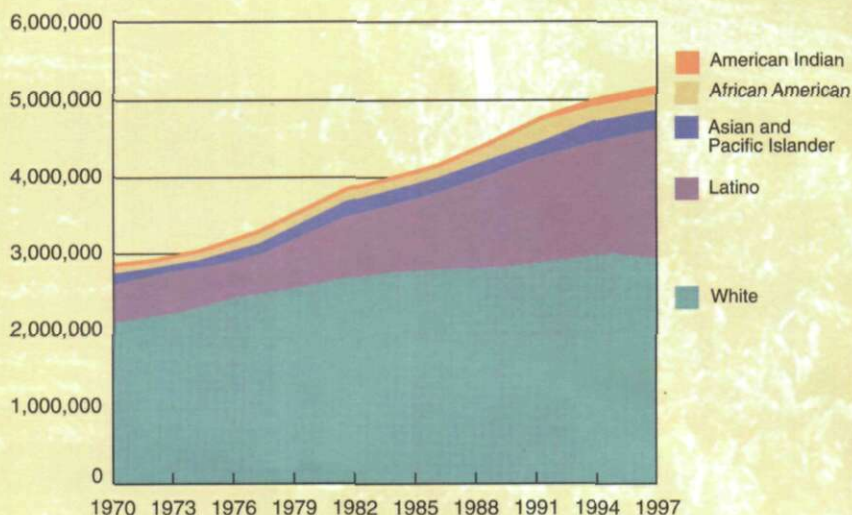
(Based on Percentage Change)

City	County	Population	% Change
Taft*	Kern	8,950	30.2
Corcoran*	Kings	20,900	21.2
Brentwood	Contra Costa	20,050	17.3
Rio Vista*	Solano	4,350	11.3
McFarland*	Kern	9,250	9.8
Rocklin*	Placer	31,700	7.6
Coronado	San Diego	28,700	7.1
Cloverdale	Sonoma	6,075	7.1
Fort Jones	Siskiyou	640	6.7
Murieta	Riverside	41,550	6.5

\* Central Valley county

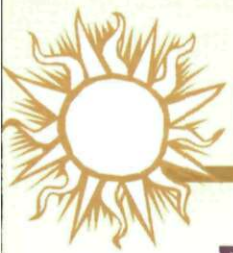
### Central Valley Population by Ethnicity

A cornucopia of people has settled in the Central Valley



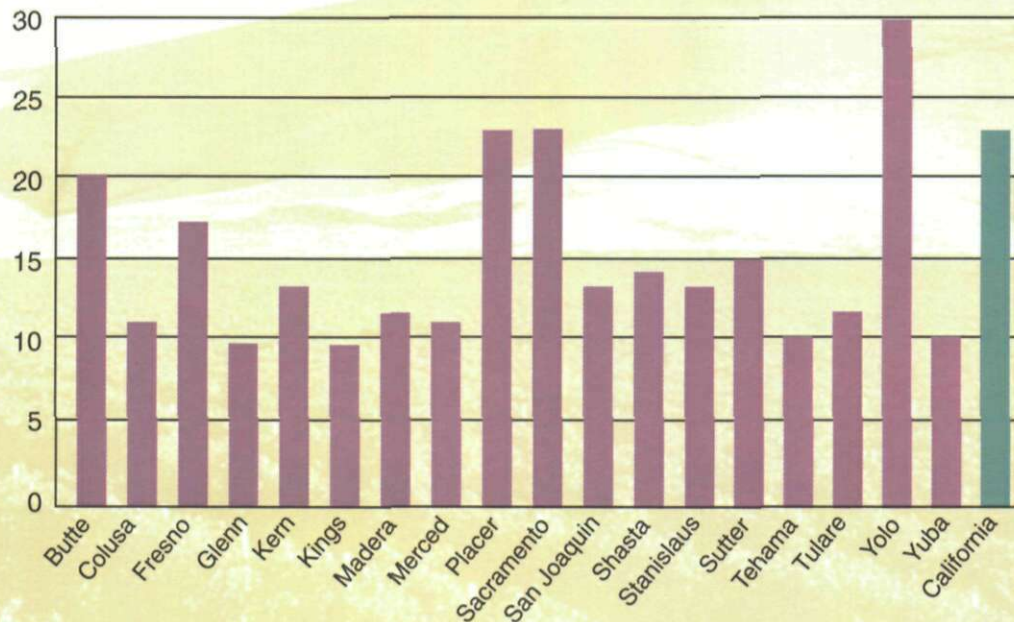


# California's Great Central Valley



## Education

### Portion of the Population with a B.A. Degree or Higher



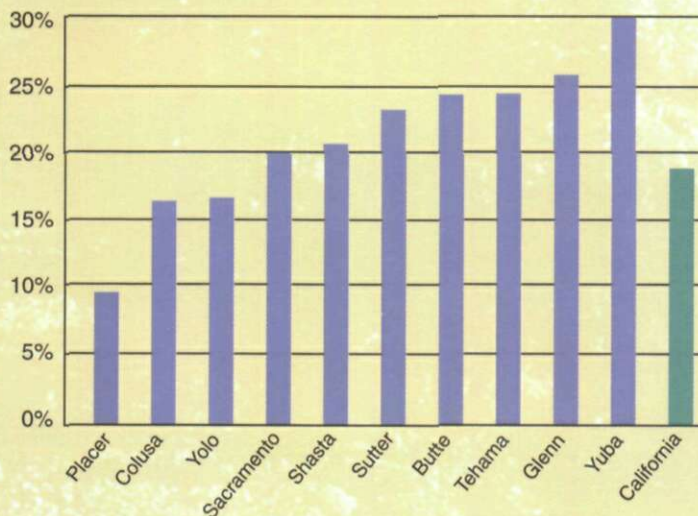
Fewer Central Valleyites have higher education degrees than do other Californians as a whole.



## Economics

### Average Poverty Rates for Children under 18

More children live in poverty in the Central Valley than elsewhere in California.



### Of 10 California Counties with the Lowest Priced New Homes, Eight are in the Central Valley

County	Price	Price Change (97-98)
Kings*	\$104,300	-4.7%
Madera*	\$105,500	-6.2%
Merced*	\$112,000	6.2%
Tulare*	\$114,000	5.2%
Kern*	\$120,000	-4%
Sutter*	\$120,500	3%
Humbolt	\$128,500	-8.2%
Shasta*	\$129,000	2.4%
Stanislaus*	\$132,400	8.1%
Lake	\$135,000	-2.9%

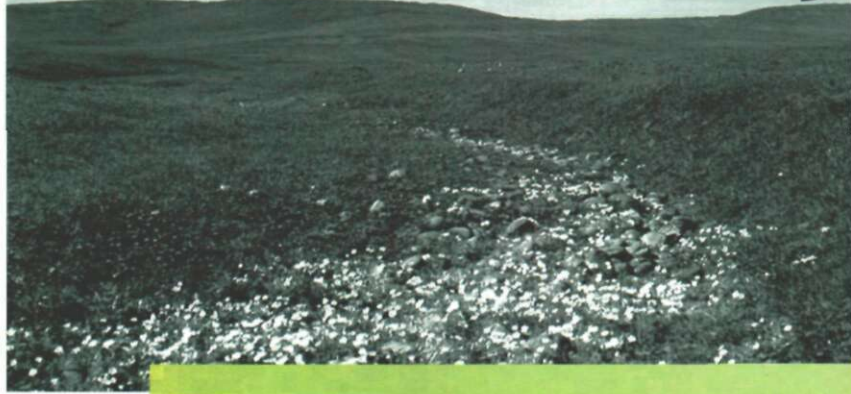
\* Central Valley county



# Here comes UC Merced,

Even the nation's highest-ranking environmentalist, Al Gore, is exerting political pressure to get UC-Merced on the fast track — regardless of the threat campus construction poses to pristine wetlands.

By William Fulton  
and Paul Shigley



ice presidents don't turn up in Merced County very often, but on a Tuesday in early April Al Gore's plane hit the tarmac at Castle Air Force Base in Atwater just before noon. Gore was an hour late because of developments in Kosovo, but his tardiness didn't dampen Merced's enthusiasm for him — nor, apparently, did it dampen his enthusiasm for Merced.

The reason was simple: Although Gore arrived at a stark symbol of the Central Valley's current economic problems — Castle closed in 1995 — he was there to learn about the project that most observers believe is the Valley's best bet for future prosperity: the coming University of California campus at Merced.

After being greeted by the Golden Valley High School Band, Gore spent four hours meeting with local farmers, political leaders, students and teachers, listening to ambitious plans for the long-anticipated University of California campus.

Local leaders boasted about the digital technology and environmental research planned for UC Merced and asked for Gore's support in moving along construction of the campus, which is scheduled for ground breaking in about two years.

Then, flanked by two of the Valley's leading Democratic politicians — U.S. Representative Gary Condit (D-Modesto) and Lieutenant Governor Cruz Bustamante — Gore declared his enthusiastic support for the whole UC-Merced effort. "I'm very impressed with what you guys are doing," he gushed.