

WHERE-TO-GO

Hotel, Resort, and Travel Department

For space and rates write to
The Where-to-go Bureau, 8 Beacon Street
Boston, Mass.

NEW YORK

The world
is full of hotels
but there is
only one "Waldorf"



THE
WALDORF-ASTORIA

Park Ave. • 49th to 50th
New York

PENNSYLVANIA

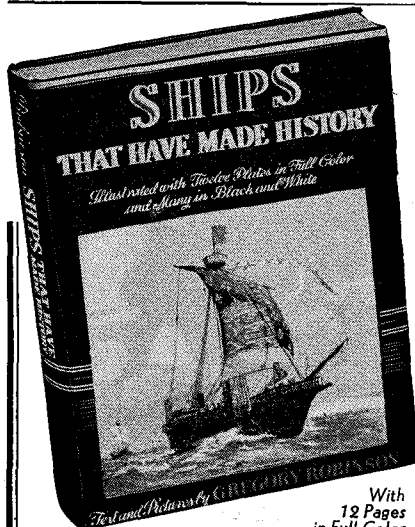
SEE
Pennsylvania
THIS YEAR!



● Spring, Summer, Fall or Winter Pennsylvania is a traveler's paradise! Whatever you want — superb mountain scenery, lakes, deep forest, top-notch hunting and fishing, historic interest — they're all here, served by 30,000 miles of fine highways. Write Dept. B, Pennsylvania State Publicity Commission, Harrisburg, Pa., for your Hospitality Passport, also Map and Travel Guide.



Where-To-Go for Sept. closes July 29



Text and Pictures by
GREGORY ROBINSON

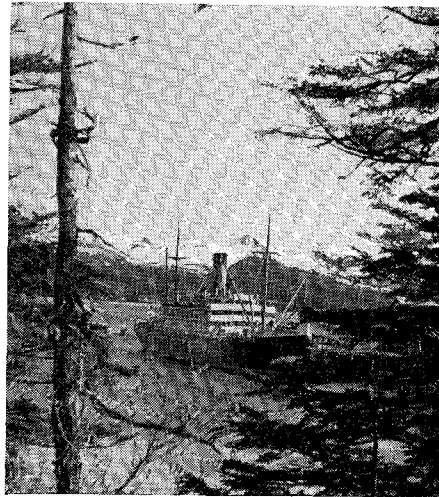
Vivid stories of the colorful sailing ships which contributed such gorgeous chapters to the history of the world — all full of romance, action and adventure.

ORIGINALLY \$3.75

NOW ONLY **\$1.89**

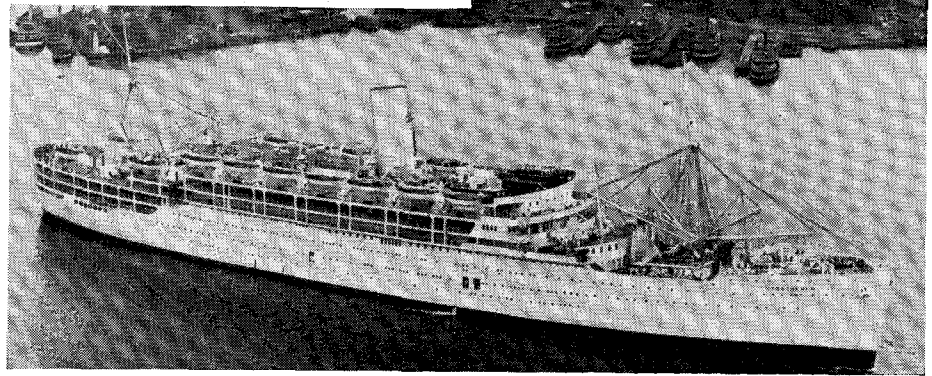
Send check for your copy to:

THE FORUM PUBLISHING CO.
570 Lexington Avenue, New York



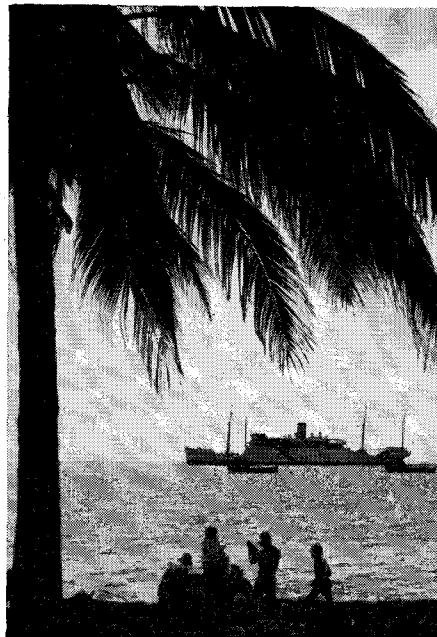
Alaska S.S. Photo

“Surprise Ports” are featured in Alaska cruises as depicted in the photograph at the left, showing the liner Baranof tied up while her passengers explore nearby forests, or fish

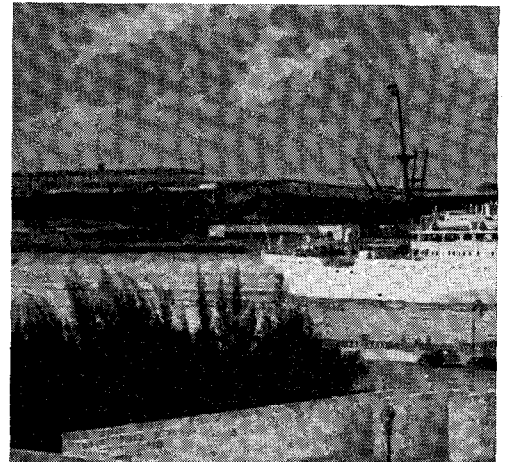


Cunard Line Photo

The P. & O. liner Stratheden in Sydney Harbor, Australia, is shown above; and, below, the liner Lady Drake at St. Kitts, British West Indies



Canadian National S.S. Photo



United Fruit Company's

intrigued with the intonations of the language; others are alive to color and sound; to still others it may be just the opportunity to stretch one's legs ashore with one's shipboard companions.

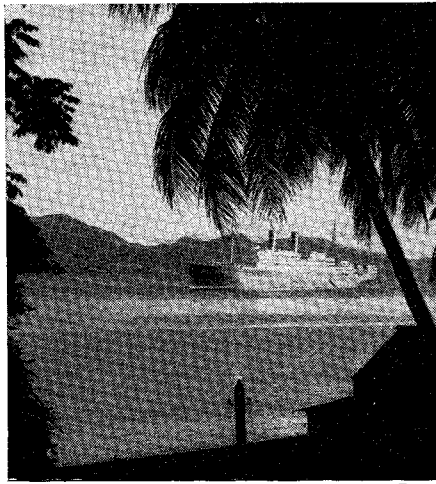
That's what makes *ports of call*, that modest reference on all travel folders, the most thrilling and adventurous part of a sea journey.

And no matter the impressions told you by your friends — to you it will bring something different, for what you discover in these same ports of call will be deep within yourself.

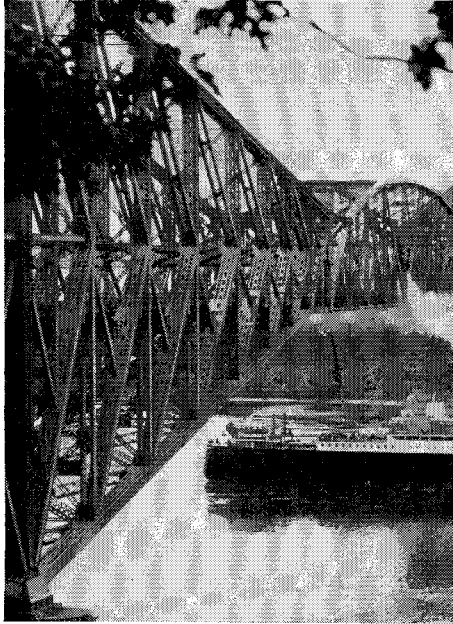
Ports

by **HARRY**

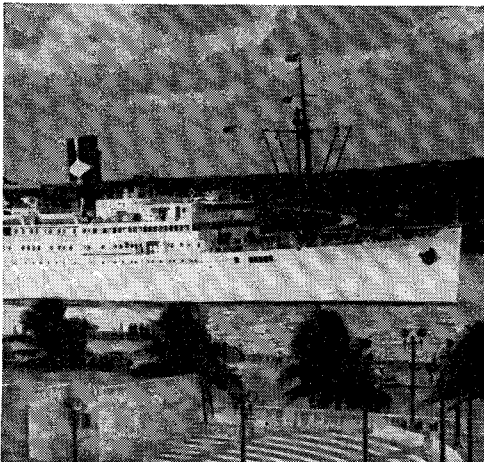
Brilliant sunshine and deep shadow of tropical ports are pictured at the right, with the liner Rotterdam at anchor in Charlotte Amelie harbor, on a recent Caribbean cruise



Holland-America Photo

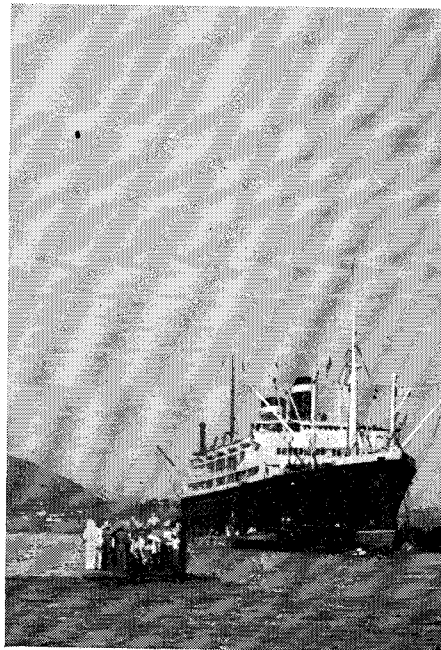


Canadian Pacific S.S. Photo



Unifruitco Photo

Quebec's famous bridge and the liner Duchess of Atholl passing under it are shown above; and, below, the Santa Paula lying off LaGuaira, Venezuela



Grace Line Photo

of Call J. PRICE

Are you one who thrills to the sight of a strange harbor? Then you will respond to the spectacle of Rio de Janeiro, by day or night. Its landlocked harbor, with its superb brilliance of coloring, is among the world's most admired. The city itself extends almost 6 miles along the broken seafloor of a narrow alluvial strip between the mountains and the ocean. The rich hillside vegetation is in striking contrast to the expanses of gray rock. Notice the Pao de Assucar (Sugar Loaf Mountain). Sugar Loaf is to Rio what the Empire State Building is to New

York City. Note also Tijuca — the highest point in the foreground, yet 30 miles away — and the almost fantastic shapes of the Organ Mountains with the "five fingers of God."

The city is worthy of its setting, with its famous Promenade of white marble, five miles long, its palatial city squares,

IN NEW YORK

Enjoy THE SHELTON HOTEL'S "Added" Attractions

The Shelton's added attractions bring it out of the average hotel class.

A swimming pool, gymnasium, solarium, library are here for YOUR enjoyment.

As for your room, it is quiet, tastefully decorated, it's one of the most pleasant rooms you could find in any hotel.

And The Shelton's location is ideal...on the edge of the Grand Central zone.

Rates: \$3 per day single

SHELTON HOTEL
LEXINGTON AVE., at 49th ST.
NEW YORK

CRAWFORD HOUSE

Discriminating people return each summer to the Crawford House at Crawford Notch. Up to date rooming space - the best of food - music by Boston Symphony players - Golf - Tennis - Swimming - Riding - Boating - Hiking - no hay fever. Season June 26 - Oct. 5. Rates with meals \$6 a day and up. Booklet and diagnosis of weekly rates - address: Barron Hotel Co., Crawford Notch, N.H. Or ask Mr. Foster Travel Offices.

CRAWFORD NOTCH
WHITE MTS. N.H.



HOTEL SHERATON

Perfect location on the Charles River Esplanade assures cool comfortable rest.

'3.50 up—Single, '5. up—Double

Frank G. Anderson
RES. MANAGER

Robt. C. Nordblom
MAN. DIRECTOR