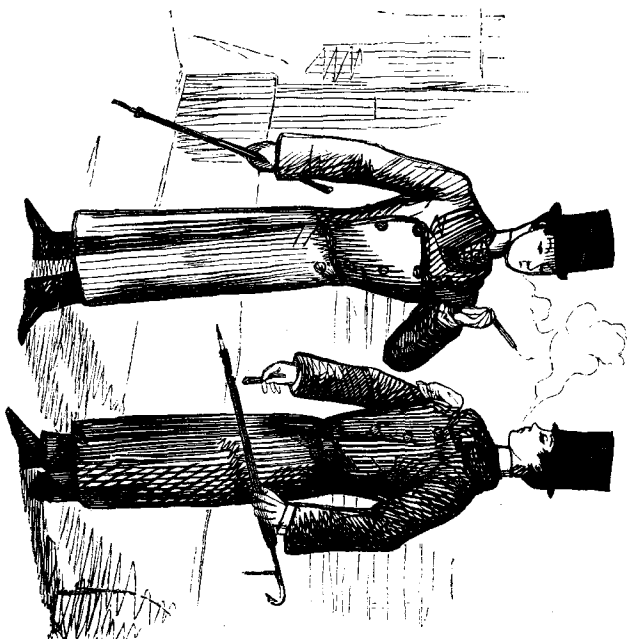


Comicalities, Original and Selected.



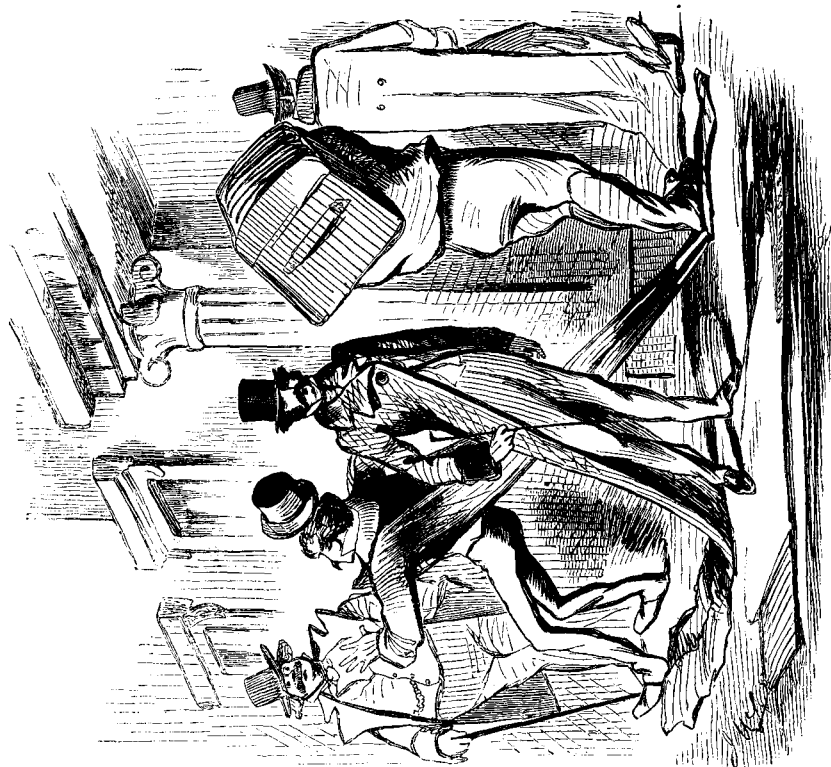
A HARD CASE.

STEEN PARENT.—"There it goes into the Fire; and don't let me see any more pipes or tobacco in the House."
 ASHERVED YOUTH.—"But what's a fellow to do, when all the men of his own age smoke?"

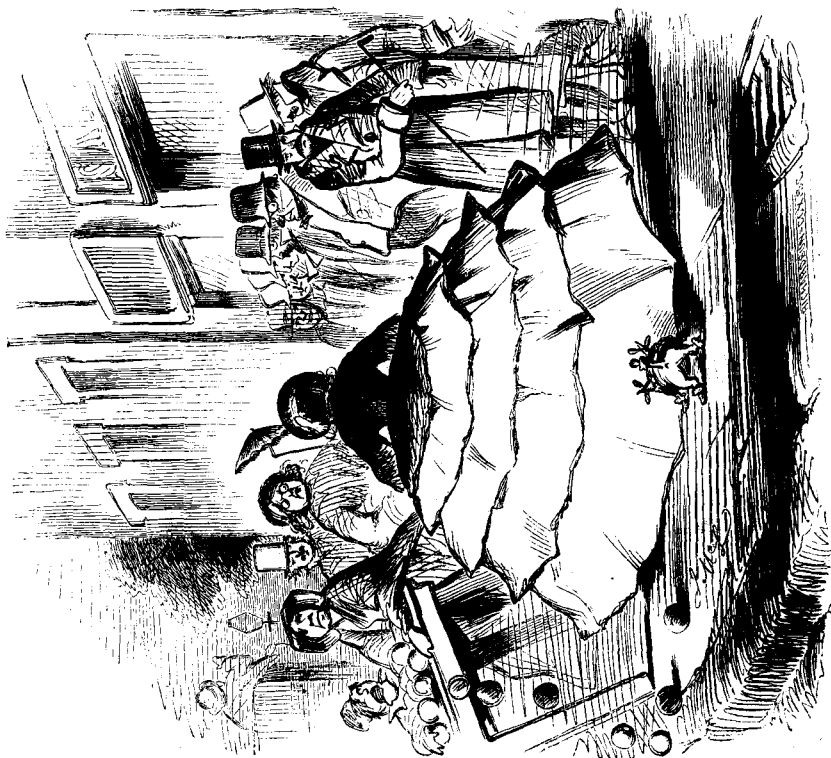


GREAT BOON TO THE PUBLIC.

FIRST SWILL (who has just come out in the Costume of the Period).—"I say, Gus, this is about the thing. What shall we do now?"
 SECOND SWILL.—"Well, a— a— a— I was a-a-goin' to show myself in Broad-way. Come along, Old Fellow."



SPRING FASHIONS FOR GENTLEMEN.



SPRING FASHIONS FOR LADIES.

Fashions for April.

Furnished by Mr. G. BRODIE, 51 Canal-street, New York, and drawn by VOIGT from actual articles of Costume.



FIGURE 1.—MORNING ROBE.

THE above chaste design for a Morning Robe sufficiently explains itself. The material most appropriate for its fabrication is an embroidered cambric muslin; but the same style, with the exception of the *jupe*, may be produced in various other materials.