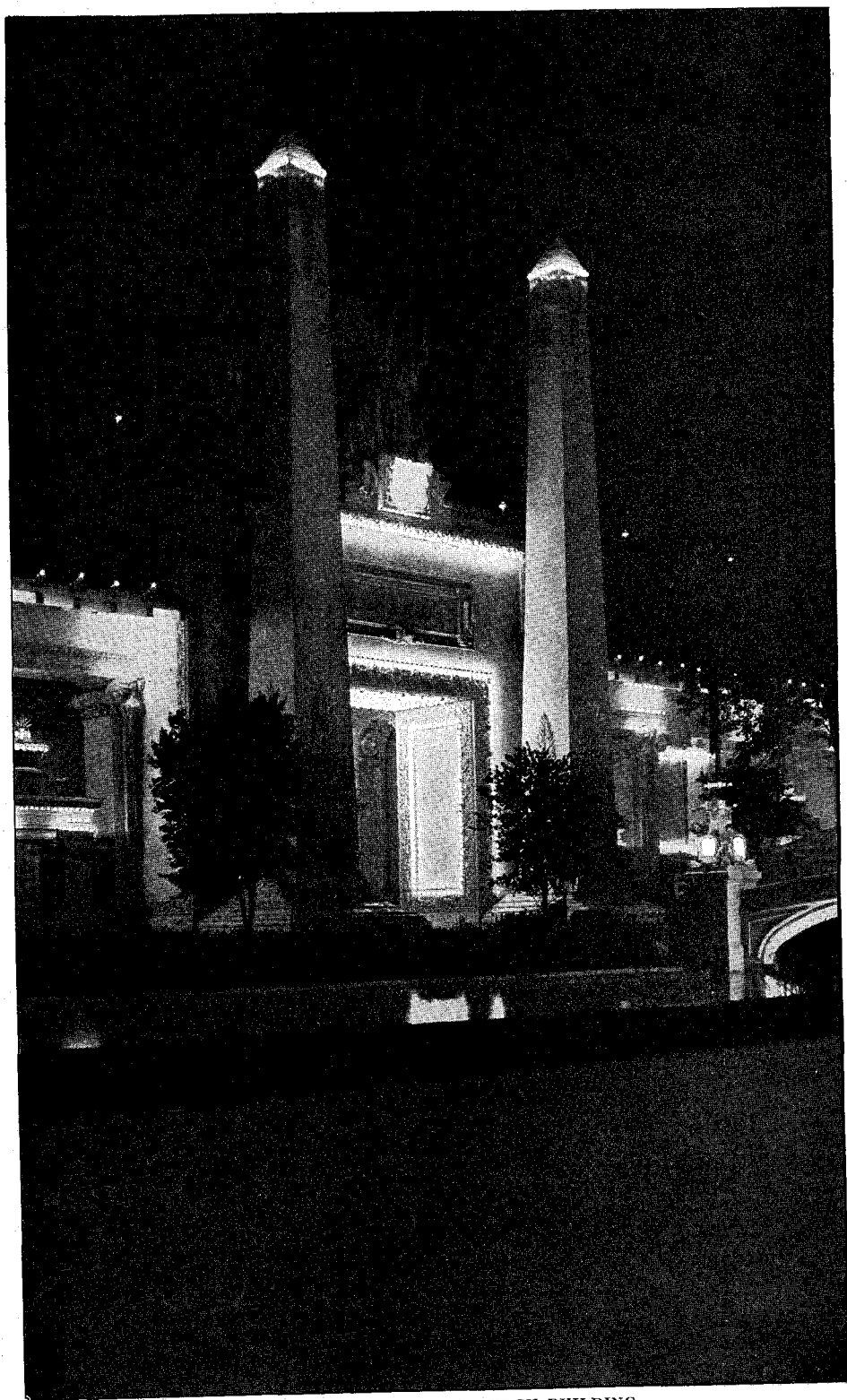


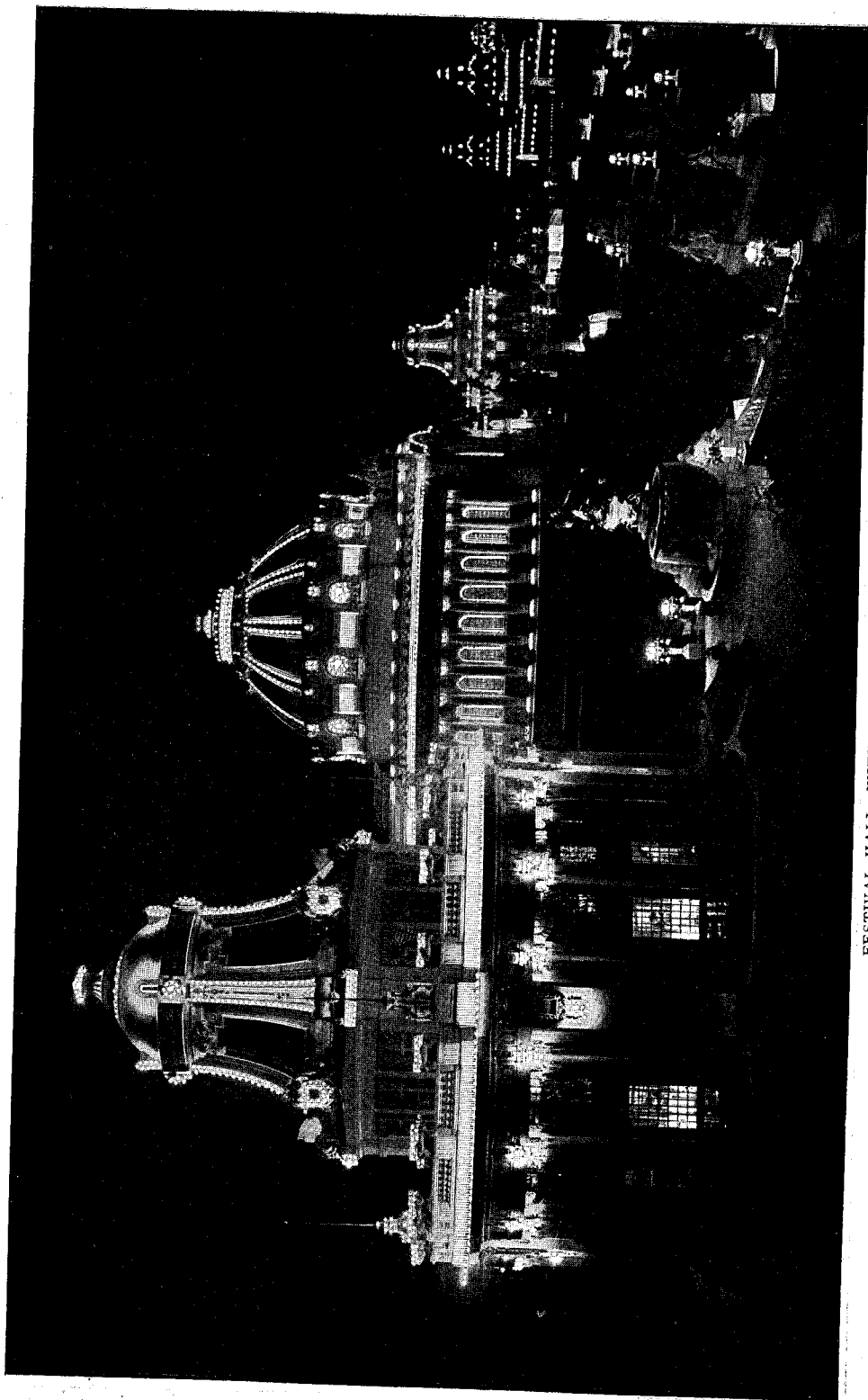
# THE WORLD'S FAIR AT NIGHT



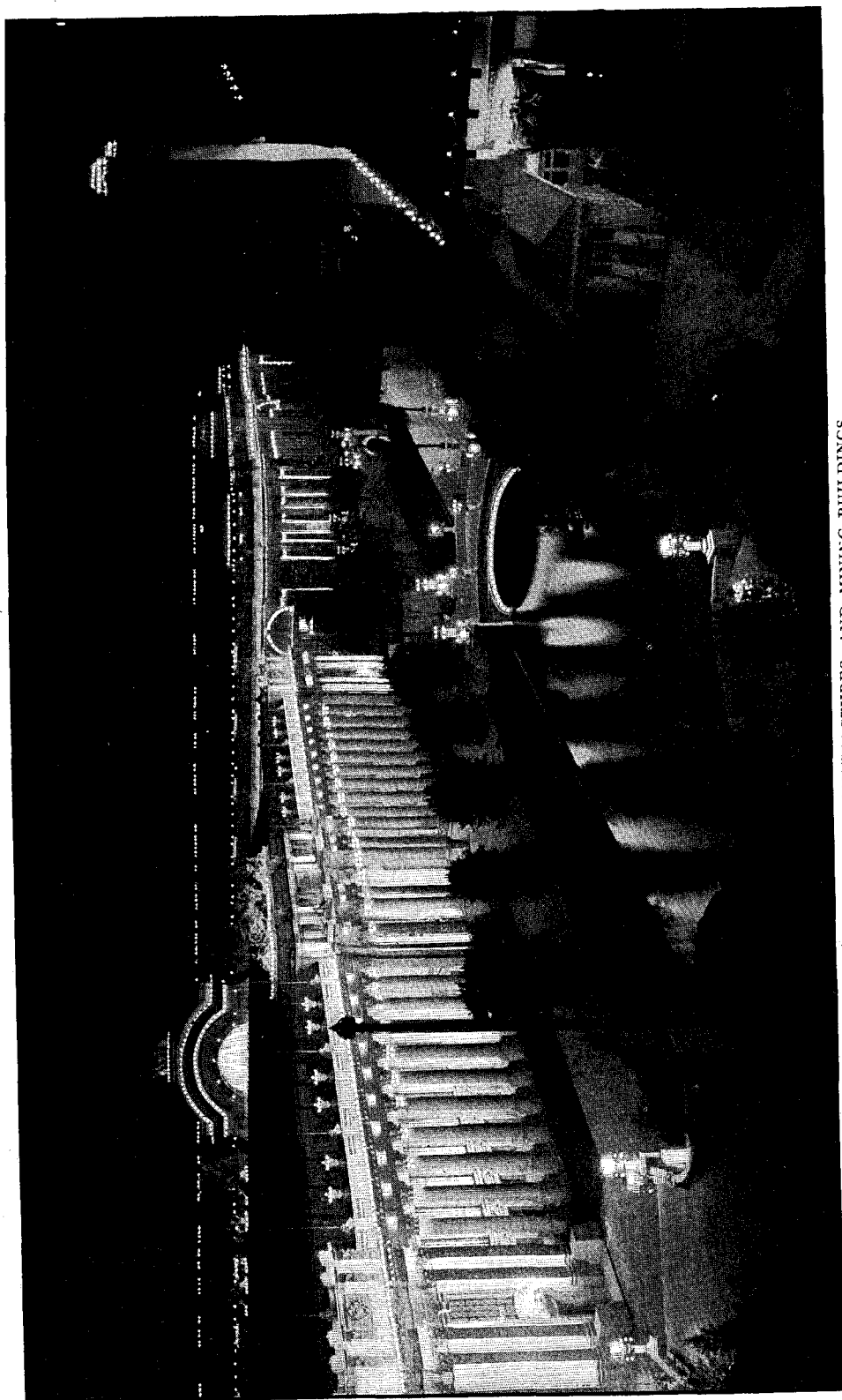
PHOTOGRAPHS BY ARTHUR HEWITT



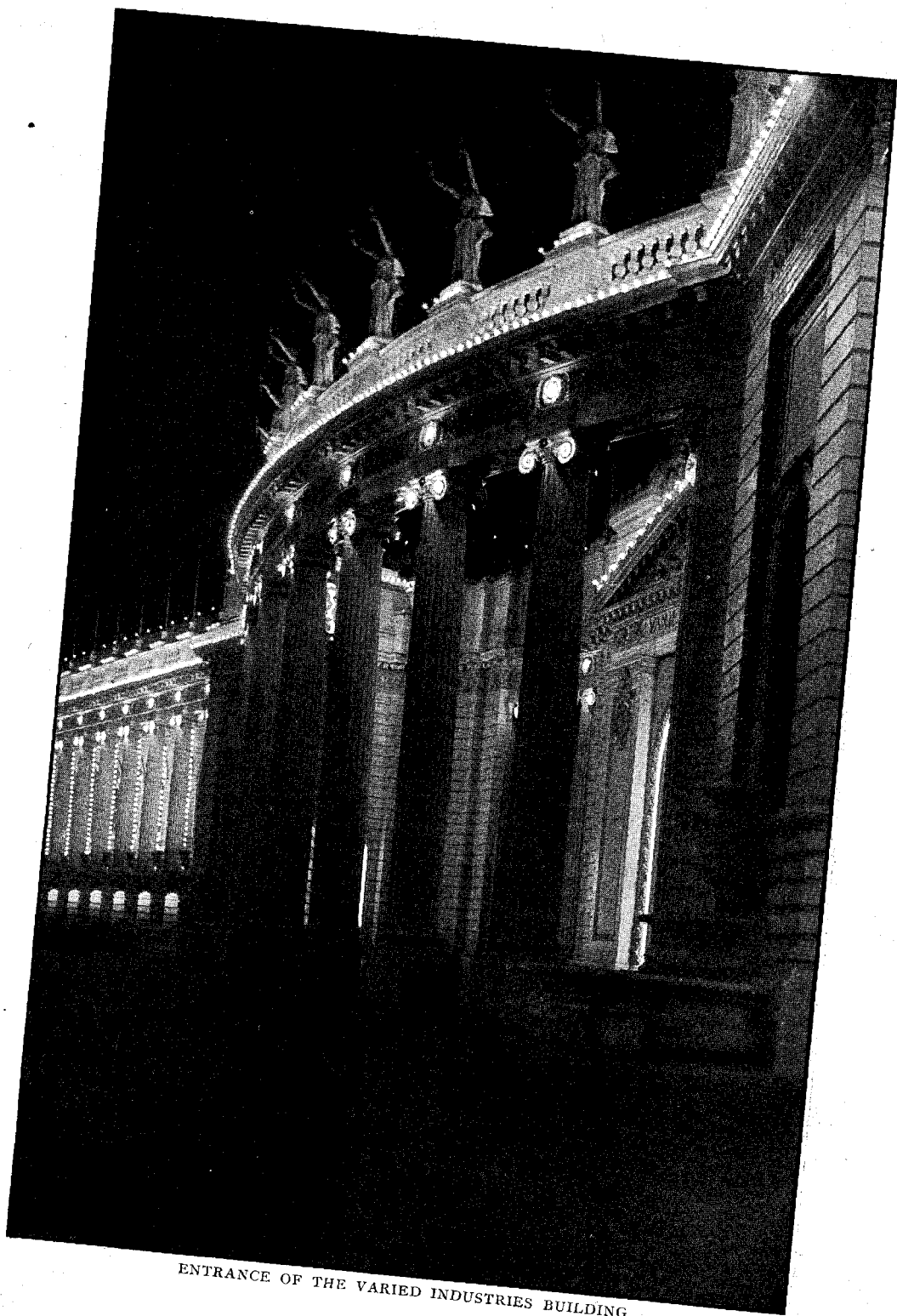
THE MINING AND METALLURGY BUILDING



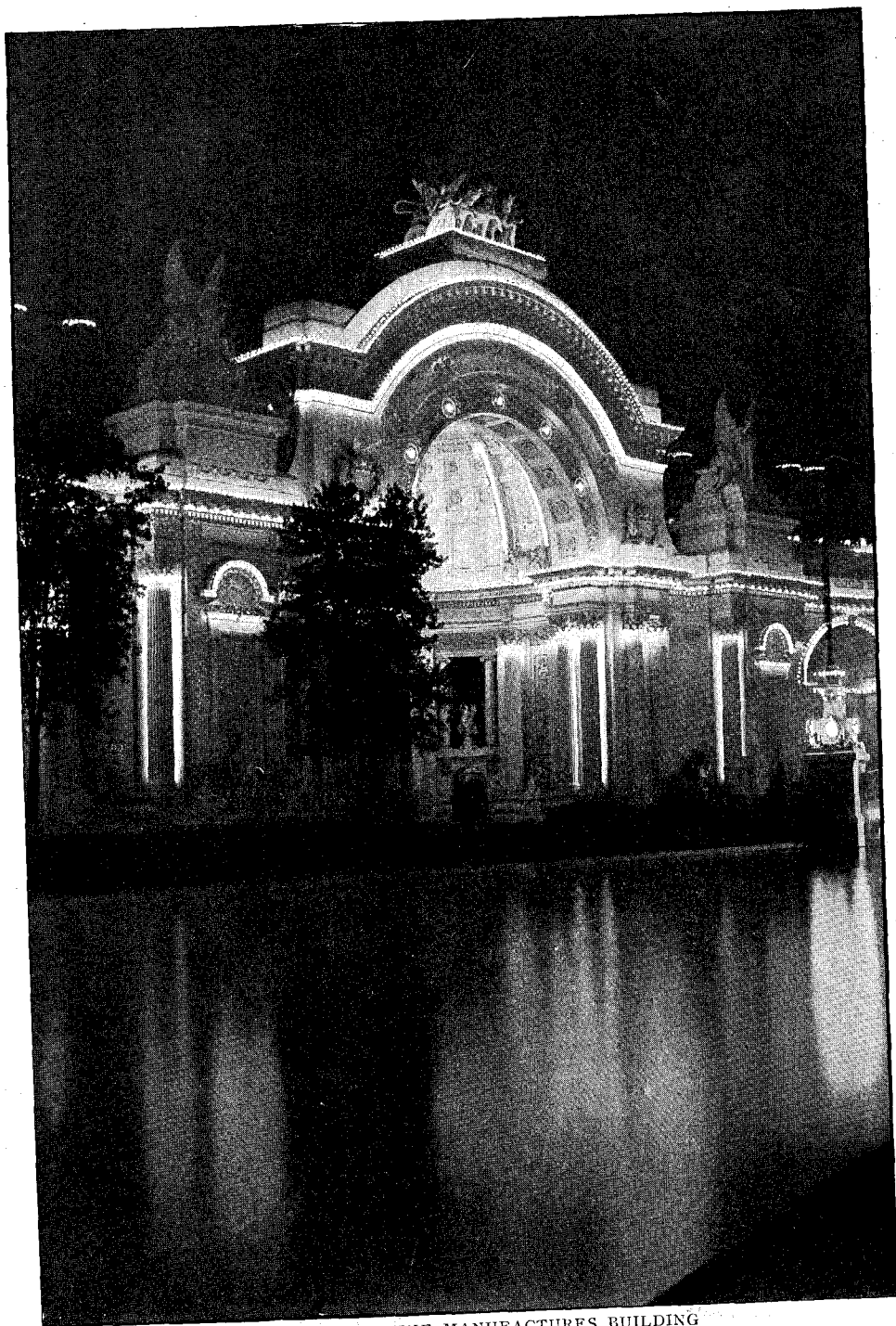
FESTIVAL HALL, WITH EAST AND WEST PAVILIONS



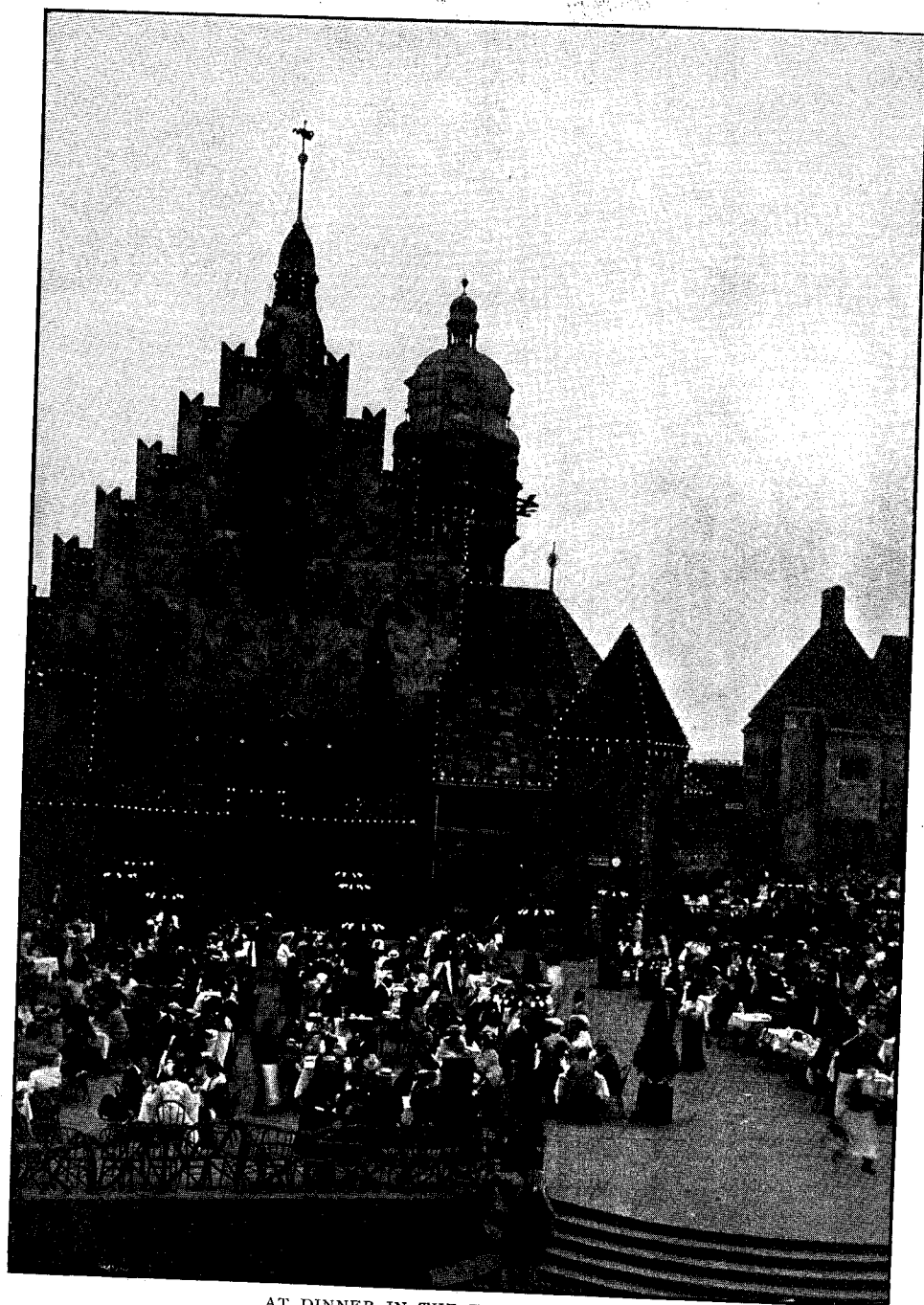
THE EDUCATION, MANUFACTURES, AND MINING BUILDINGS



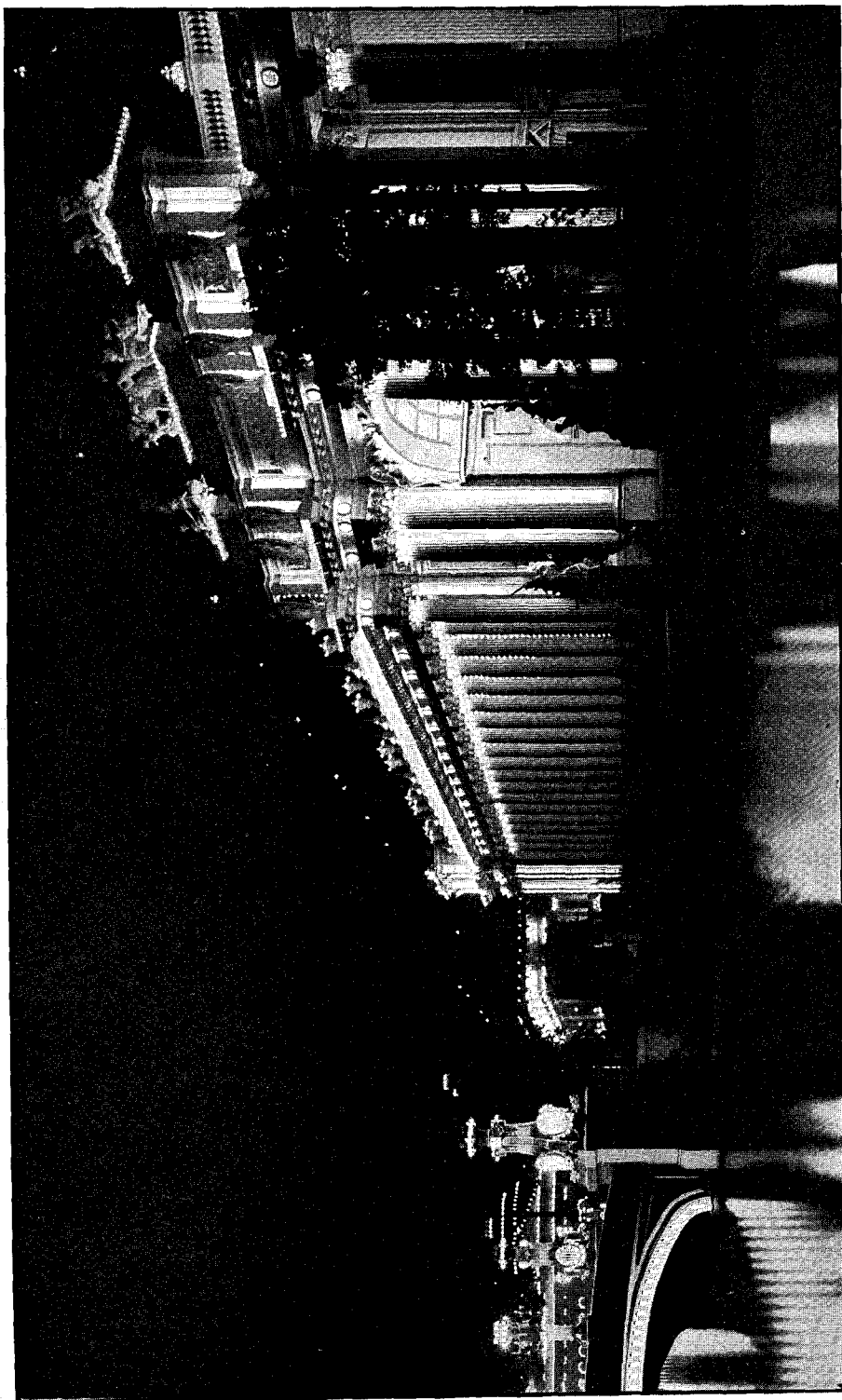
ENTRANCE OF THE VARIED INDUSTRIES BUILDING



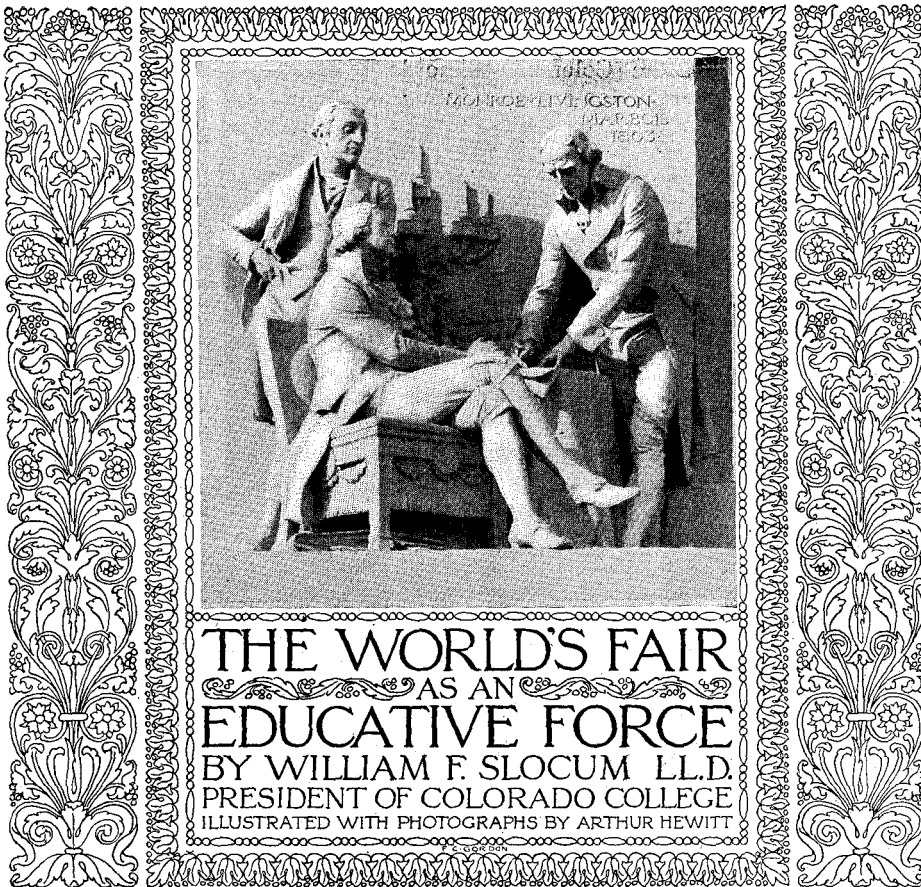
ENTRANCE OF THE MANUFACTURES BUILDING



AT DINNER IN THE TYROLEAN ALPS



THE EDUCATION BUILDING



**B**EFORE the memory that many of us have of the beautiful White City which arose in Chicago in 1893 has grown dim, there has arisen in St. Louis another city of the kind, as wonderful in its way, and even greater in extent. We listen with surprise as we are told that the space it covers is greater than that occupied by the Centennial Exposition at Philadelphia, the Columbian at Chicago, and the Pan-American at Buffalo combined. We do not wonder that many have asked, and not unthinkingly, Why all this so soon? Has enough transpired in the world of thought during the past ten years to justify this expenditure of money and time? The money alone that has been spent here is three times what the United States Government paid for the whole territory covered by the famous Purchase of 1803; and this is only a small con-

tribution to the enterprise compared with the thought, the labor, and the tireless devotion of those who have planned and executed it.

One need only recall what the other great Fairs have done to enlighten and educate the masses of people who have flocked to them to be sure that this, too, will have its own definite and direct results, though it may be too early now to tell what these are to be, with the same certainty with which we note the specific outcome of each of the others. We recall clearly the result of the Crystal Palace Exposition, in the permanent Art Exhibits, first in London at South Kensington, and thence spreading widely elsewhere; we see that the entire readjustment of primary education in France was largely the outgrowth of the educational exhibit at Paris in 1878; and how marked was the development of manual