

# KINGSLEY DOUBLE-CROSTIC NO. 1557

Reg. U.S. Patent Office

By Doris Nash Wortman

- DEFINITIONS**
- A. Lover of Aida in the opera.
- B. Offensively coarse, rough, grating, etc.
- C. Revolving with a buzzing sound.
- D. Joyous curtain line by the children in Maeterlinck's *Blue Bird* (2 wds. after *There are*).
- E. Saint who had to be buried in the yard of the church to keep the weather in check (862 A.D.).
- F. Enter upon a railway trip.
- G. Thracian ally of the ancient Trojans, whose horses were important in the auspices.
- H. Peak of fitness; hence, a good thing to be "in" (2 wds.).
- I. Important contemporary Amer. woman writer of fiction, plays, etc. (*Back Street*, etc.).
- J. Delivered up to a foreign jurisdiction.
- K. Ornamental growing plants used to cover extensive areas (2 wds.).
- L. Woman, famous for good works socially and for peace (1860-1935); man, artist of the macabre, contemporary.

**WORDS**

5 127 92 59 21 96 35 150

163 41 62 8 67

33 17 1 178 123

45 81 88 40 177 32

15 6 104 166 130 171 38

112 181 151 120 157 68 172

98 83 75 65 2 16

108 70 50 100 29 87 154

28 79 175 39 48

131 113 162 139 57 136 153 146 72 149

52 7 124 22 173 19 115 107 27

110 34 23 138 176 46

- DEFINITIONS**
- M. The Happy Warrior of Wordsworth, as left in obscurity (comp.).
- N. Opera hat.
- O. Common spring - flowering shrub.
- P. Humorous and effective campaign slogan of recent years (3 wds.).
- Q. Empty - headed person (slang).
- R. Union organizer (1850-1924).
- S. Subject of WORD R's special interest.
- T. With irreproachable correctness.
- U. At present in our possession (3 wds.).
- V. Brilliant subject of the autobiography *Present Indicative* (contemporary).
- W. Obtruding one's services where they are not needed.
- X. What in a Kipling story was great, grey-green, and greasy.
- Y. Long established slang for the prude (2 wds.).

**WORDS**

165 95 74 12 97 134 55 109 126 105 36

42 128 156 119 26

24 60 160 129 13 94 101 145

117 135 84 159 91 25 167 102

78 168 47 64 180 11

182 18 3 93 37 152 21

31 147 118 122 61

53 85 80 143 103 158 89 9 116 141

58 174 66 77 54 49 43 148 20

132 164 90 86 140 76

4 121 142 161 114 14 133 106 56

169 44 179 71 10 137 63

82 144 69 155 111 99 73 170 125 30

## DIRECTIONS

To solve this puzzle you must guess twenty-odd WORDS, the definitions of which are given in the column headed DEFINITIONS. Alongside each definition, there is a row of dashes—one for each letter in the required word. When you have guessed a word, write it on the dashes, and also write each letter in the correspondingly numbered square of the puzzle diagram . . . When the squares are all filled in, you will find that you have completed a quotation from some published work. If read up and down, the letters in the diagram have no meaning . . . Black squares indicate ends of words; if there is no black square at the right side of the diagram, the word carries over to the next line . . . When all the WORDS are filled in, their initial letters spell the name of the author and the title of the piece from which the quotation has been taken. Of great help to the solver are this acoustic feature and the relative shapes of words in the diagram as they develop. Authority for spellings and definitions is Webster's New International Dictionary, Second and Third Editions.

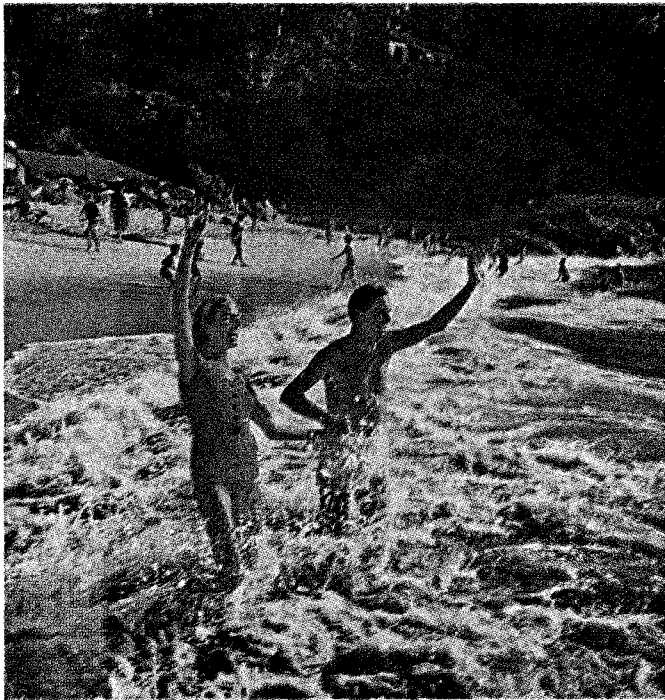
						1	C	2	G	3	R	4	W	5	A		6	E	7	K	8	B		9	T	10	X								
11	Q	12	M			13	O	14	W	15	E			16	G	17	C	18	R	19	K	20	U		21	A	22	K	23	L		24	O		
25	P	26	N			27	K	28	I	29	H	30	Y	31	S	32	D			33	C			34	L	35	A	36	M	37	R	38	E	39	I
40	D			41	B	42	N	43	U	44	X	45	D	46	L	47	Q			48	I	49	U	50	H			51	R	52	K	53	T	54	U
55	M	56	W			57	J	58	U	59	A			60	O	61	S	62	B	63	X	64	Q	65	G			66	U	67	B	68	F	69	Y
70	H			71	X	72	J	73	Y	74	M	75	G	76	V			77	U	78	Q			79	I	80	T	81	D	82	Y			83	G
84	P	85	T			86	V	87	H	88	D			89	T			90	V	91	P	92	A	93	R	94	O	95	M			96	A	97	M
98	G	99	Y			100	H	101	O	102	P	103	T	104	E	105	M	106	W	107	K			108	H	109	M	110	L	111	Y			112	F
113	J	114	W	115	K	116	T	117	P	118	S	119	N	120	F			121	W	122	S	123	C			124	K	125	Y	126	M	127	A		
128	N	129	O			130	E	131	J			132	V	133	W	134	M	135	P	136	J			137	X	138	L	139	J	140	V	141	T		
142	W	143	T	144	Y	145	O	146	J			147	S	148	U	149	J			150	A	151	F	152	R	153	J	154	H	155	Y			156	N
157	F	158	T	159	P			160	O	161	W	162	J	163	B	164	V	165	M	166	E			167	P	168	Q	169	X	170	Y	171	E	172	F
173	K			174	U	175	I			176	L	177	D	178	C	179	X	180	Q	181	F	182	R												

Solution of last week's Double-Croctic will be found on page 8 of this issue.

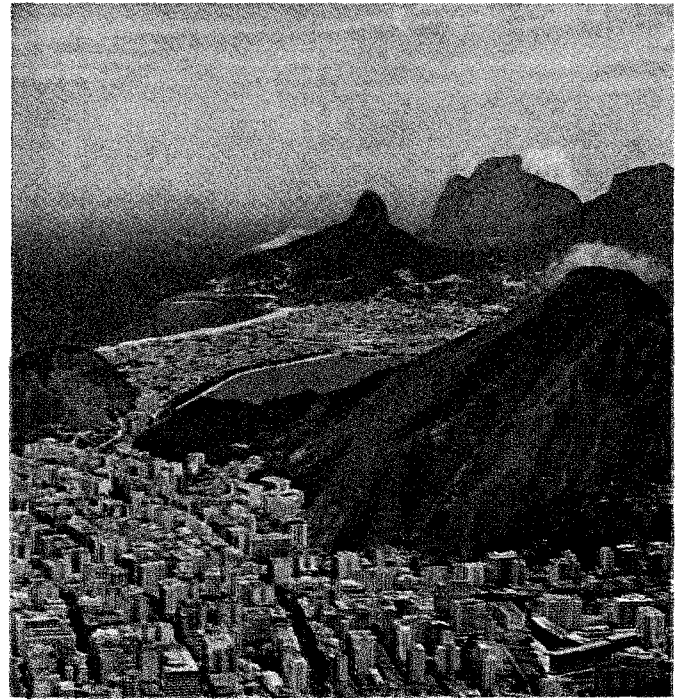
FEBRUARY 8, 1964

Saturday Review

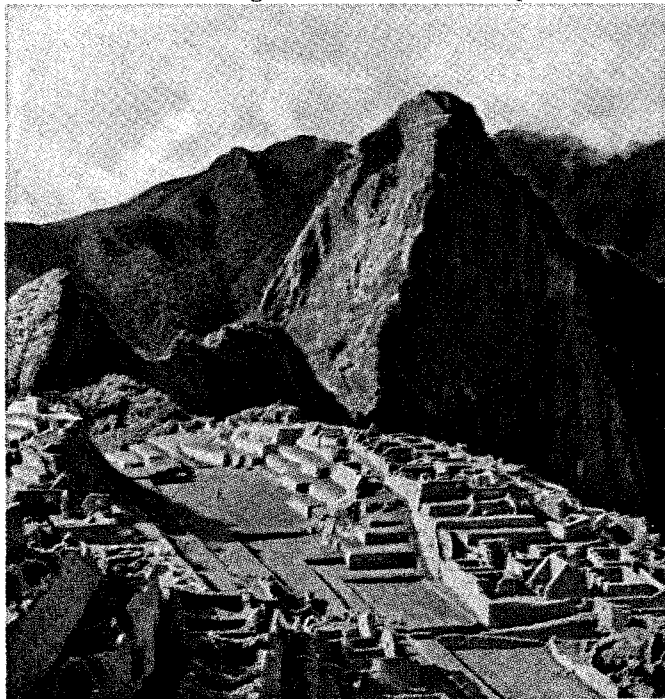




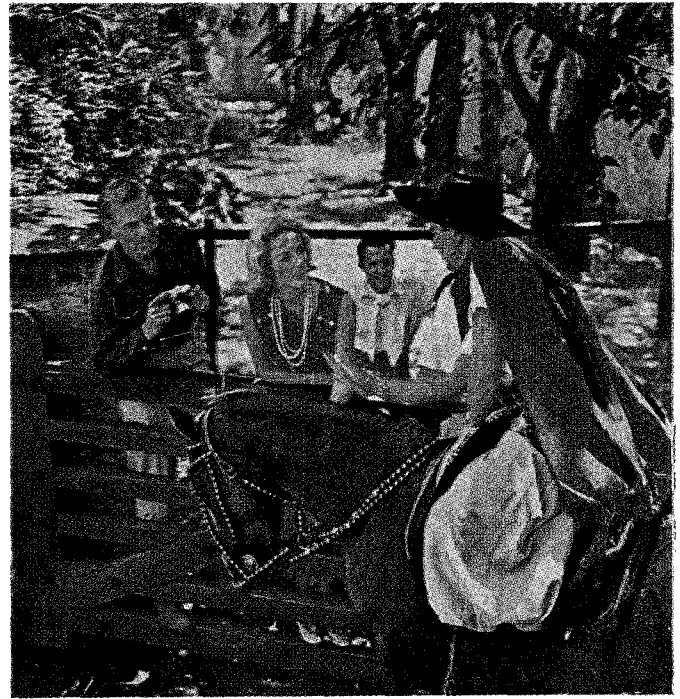
Magnificent beaches. This is Zapallar, in Chile.



Modern cities. Exciting Rio is just one of them.

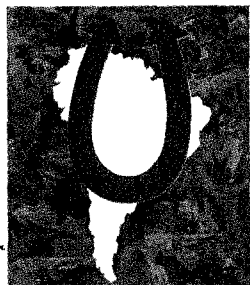


Ancient cities. This one is Machu Picchu, in Peru.



Romantic ranches. Shown here, Argentina's Pinar Azul.

## You haven't seen anything till you've seen South America!



Both coasts for the price of one! Go one way, return the other on Pan Am • Panagra.

See both coasts for the price of one. East coast or west coast, there's so much to see. So much to do. Enjoy the old Spanish charm of Caracas. Or visit modern Brasilia. Night life in Rio. Steaks in São Paulo—where some of the finest restaurants offer more than 25 entrees at \$1.50 or less! Skiing near Santiago, Chile. Magnificent Inca ruins of Machu Picchu. Silver shopping in leisurely Lima, Peru. (Or the wonderful Indian dolls you can buy anywhere in Peru.) No doubt about it: you haven't seen anything till you've seen South America—coast to coast. And your ticket 'Round South America can cost you as little as \$630 from New York, \$578 from Miami, \$766 from Los Angeles. *On the only airline system that can fly you completely around the continent.*

