

KINGSLEY DOUBLE-CROSTIC NO. 1744

Reg. U. S. Patent Office
By Thomas H. Middleton

- DEFINITIONS**
- A. Something that follows from an antecedent cause.
- B. To oneself.
- C. American theatre critic and teacher (1852-1929) for whom a Dramatic Museum at Columbia was named.
- D. English economist (1776-1834), whose best-known doctrine has had ever-increasing importance for mankind.
- E. "One that loved not wisely but too well."
- F. Direction of the wind when Hamlet knew a hawk from a handsaw.
- G. Direction of the wind when Hamlet knew a hawk from a handsaw.
- H. An English cheese similar to cheddar.
- I. A low evergreen European shrub. (2 wds.)
- J. Loosely, the wrong type. (3 wds.; familiar, but not in WNI as a phrase).
- K. After word M, 2 words preceding stones (Thomas Noel, *The Pauper's Drive*).
- L. Humbug.
- M. 2 words preceding bones followed by word K.

WORDS

142	79	149	12	116	88				
3	76	14	171	153	10	160	189		
113	181	67	31	8	110	78	6		
133	186	17	146	38	150	112			
117	30	68	145	188	34	36			
169	120	184	45	180	90	52	159	18	
41	158	152	179	83	104	132	65	164	
190	195	147	182	77	43	122	105	185	
71	24	5	183	47	170	51	29	82	138
140	86	154	196	73	84	4	114	50	46
121	62	144	128	37	130	32			
72	107	118	102						
93	64	100	1	187	39	191	148	178	

- DEFINITIONS**
- N. Interjection of encouragement.
- O. Wife of word E.
- P. Small isolated mass.
- Q. What Emily thought the moonlight was in *Our Town*.
- R. "Omitted, all the voyage of their life is bound in and in miseries" (Julius Caesar).
- S. Defective.
- T. U. S. President; N. Y. dis-cotheque.
- U. Baked goods.
- V. Ahab's craft.
- W. Some time ago. (archaic).
- X. Cleared.
- Y. "Vaulting ambition, which o'erleaps ————" (Macbeth).
- Z. Swimmer.
- Z₁. Infer.

WORDS

61	74	42	95	172	57	55		
56	194	162	161	9	126	23	176	198
98	106	25	156	7				
27	94	87	16	168	119	66	48	
35	155	163	136	54	127	85	81	
91	175	157	115	167	60	101	143	
44	193	59	2	97	11			
108	139	197	177	40	49			
109	21	96	135	125	89			
129	111	192	22	20	165	53	151	
58	63	19	199	99	26			
173	166	123	69	33	134			
124	141	137	131	103	15	80		
13	75	174	28	92	70			

DIRECTIONS

To solve this puzzle you must guess twenty-odd WORDS, the definitions of which are given in the column headed DEFINITIONS. Alongside each definition, there is a row of dashes—one for each letter in the required word. When you have guessed a word, write it on the dashes, and also write each letter in the correspondingly numbered square of the puzzle diagram. . . . When the squares are all filled in, you will find that you have completed a quotation from some published work. If read up and down, the letters in the diagram have no meaning. . . . Black squares indicate ends of words; if there is no black square at the right side of the diagram, the word carries over to the next line. . . . When all the WORDS are filled in, their initial letters spell the name of the author and the title of the piece from which the quotation has been taken. Of great help to the solver are this acrostic feature and the relative shapes of words in the diagram as they develop. Authority for spellings and definitions is Webster's New International Dictionary, Second and Third Editions.

				1	M	2	T	3	B	4	J		5	I	6	C		7	P	8	C	9	O		10	B	11	T	12	A					
13	Z ¹			14	B	15	Z	16	Q	17	D	18	F		19	X	20	W	21	V		22	W	23	O	24	I	25	P	26	X				
27	Q	28	Z ¹	29	I	30	E			31	C	32	K	33	Y	34	E	35	R		36	E	37	K	38	D	39	M	40	U	41	G			
42	N	43	H	44	T	45	F			46	J	47	I	48	Q	49	U			50	J	51	I	52	F	53	W	54	R	55	N		56	O	
57	N	58	X	59	T			60	S	61	N	62	K	63	X			64	M	65	G	66	Q			67	C	68	E	69	Y		70	Z ¹	
71	I	72	L	73	J	74	N			75	Z ¹	76	B	77	H	78	C	79	A	80	Z	81	R			82	I	83	G	84	J		85	R	
86	J	87	Q	88	A	89	V			90	F	91	S	92	Z ¹	93	M	94	Q			95	N			96	V	97	T	98	P	99	X	100	M
		101	S	102	L	103	Z	104	G	105	H			106	P	107	L	108	U	109	V	110	C	111	W			112	D	113	C	114	J	115	S
116	A			117	E	118	L			119	Q	120	F	121	K			122	H	123	Y			124	Z	125	V			126	O	127	R	128	K
129	W			130	K	131	Z	132	G	133	D	134	Y	135	V	136	R			137	Z	138	I	139	U	140	J			141	Z			142	A
143	S	144	K	145	E	146	D			147	H	148	M	149	A	150	D	151	W	152	G	153	B			154	J	155	R	156	P			157	S
158	G	159	F	160	B	161	O			162	O	163	R	164	G			165	W	166	Y	167	S			168	Q	169	F	170	I	171	B	172	N
173	Y	174	Z ¹	175	S	176	O	177	U	178	M			179	G	180	F	181	C	182	H	183	I			184	F	185	H	186	D	187	M	188	E
189	B			190	H	191	M	192	W	193	T	194	O			195	H	196	J	197	U			198	O	199	X								

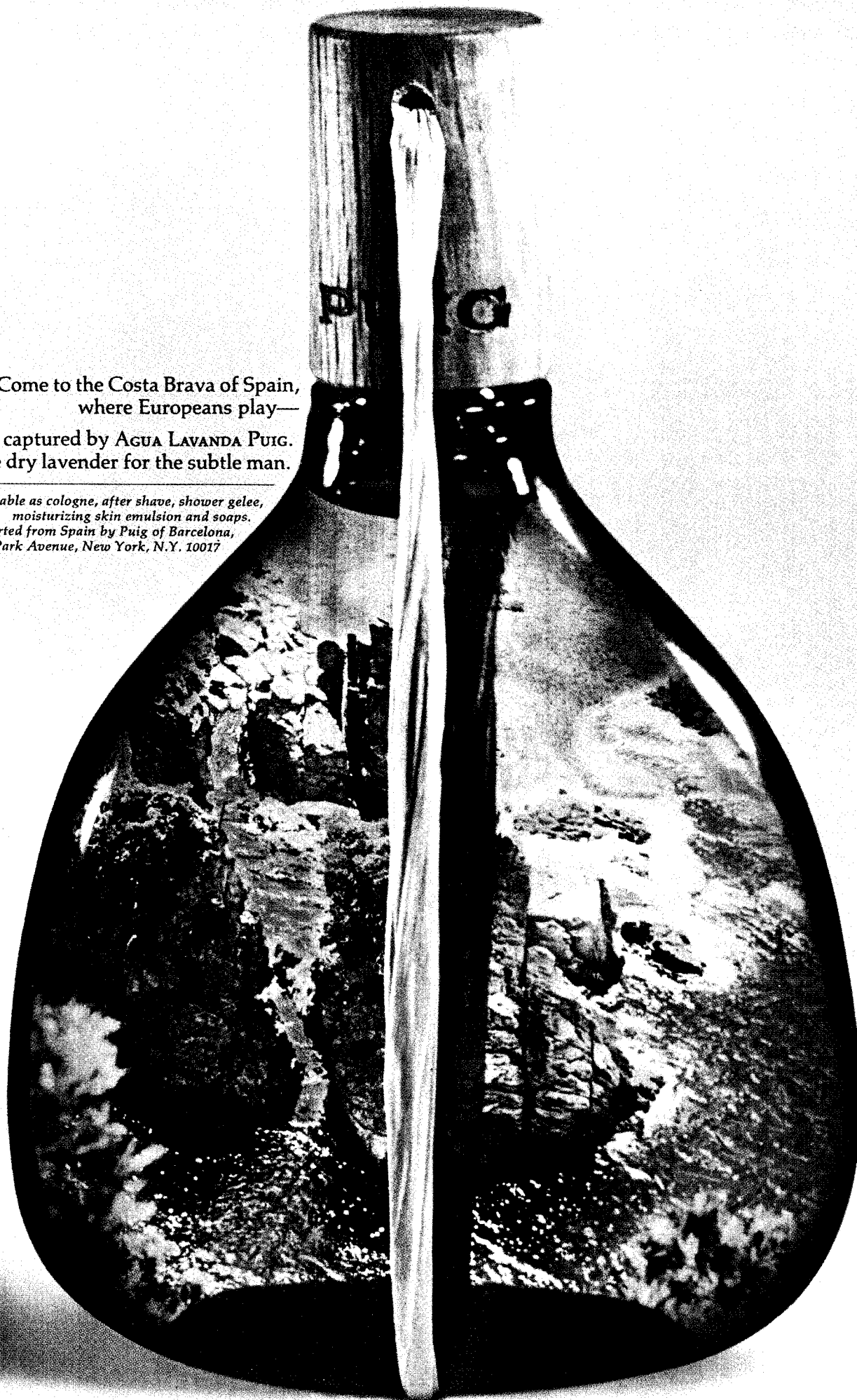
Solution of last week's Double-Crostic will be found on page 14 of this issue.

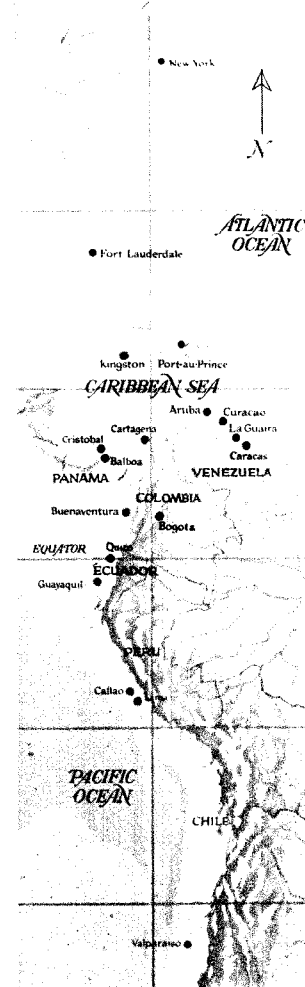
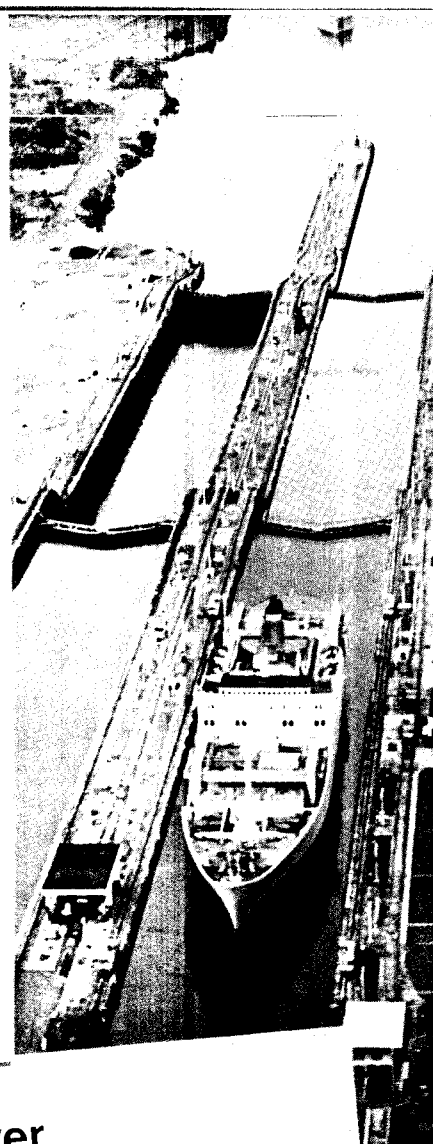
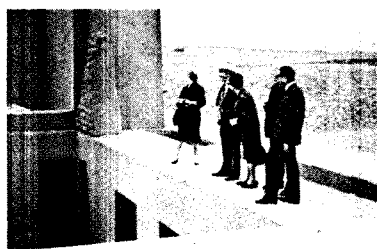
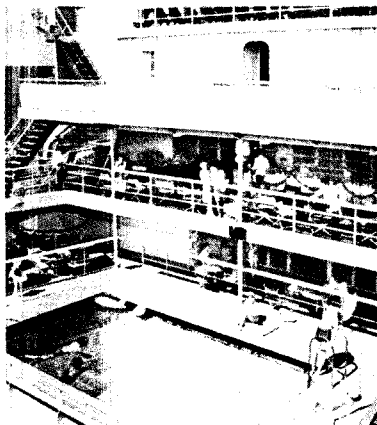
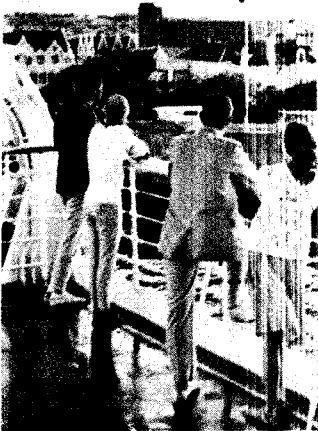
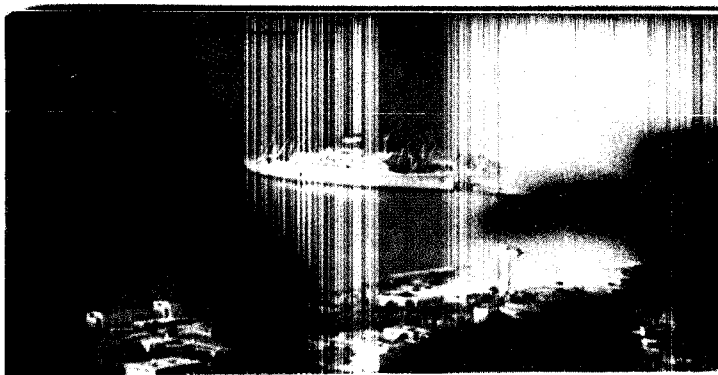
SEPTEMBER 9, 1967

Saturday Review

Come to the Costa Brava of Spain,
where Europeans play—
captured by AGUA LAVANDA PUIG.
A unique dry lavender for the subtle man.

*Available as cologne, after shave, shower gelee,
moisturizing skin emulsion and soaps.
Imported from Spain by Puig of Barcelona,
200 Park Avenue, New York, N.Y. 10017*





Clip this and discover all the wonderful ways to "Go with Grace."

MAIL TO: GRACE LINE INC., 3 HANOVER SQUARE, NEW YORK, N.Y. 10004, OR YOUR TRAVEL AGENT

Dear Sir: I'd like to "Go with Grace." Please send me your colorful brochure describing Grace Line's 52 weeks a year services.

13-day Luxury Cruise to the Caribbean and South America. Curacao, La Guaira (Caracas), Aruba, Kingston, Port-au-Prince, Fort Lauderdale. Santa Rosa, Santa Paula. 300 passengers. Sails from New York every Friday. Every Tuesday from Fort Lauderdale.

26-day Two-ocean Casual Cruise to the Caribbean and the Pacific Coast of South America. Haiti, Jamaica, Colombia, Panama Canal Zone, Ecuador, Peru. Santa Magdalena class. 117 passengers. Sails every Saturday from the Port of New York.

17- to 19-day Leisurely Cruise to the Caribbean and South America. Dominican Republic, Venezuela and Netherlands Antilles. Santa Cecilia class. 52 passengers. Sails from New York every Wednesday.

Freighter Voyages of varying lengths from U.S. Atlantic and Pacific ports to the Caribbean, Central America, and South America. Santa Lucia and Santa Ana classes. 8 to 12 passengers.

NAME _____
ADDRESS _____
CITY _____ STATE _____ ZIP CODE _____

SR-99

Grace Santos are U.S.-Flag Ships serving all the Americas exclusively.
Built, maintained and operated to strictest U.S. safety standards.

